



FAIRVIEW ARCHITECTURAL

COLOR INSPIRATION GUIDE

Project: Apple Central & Wolfe Campus
Product: Vitrabond FR
Finishes: Custom Pewter and Renaissance Silver
Photography by Tim Griffith - Tim Griffith Photography



125 Delancy Street, New York, NY | Photography by Colin Miller—Colin Miller Photography

INNOVATIVE FLEXIBLE FINISHES

At Fairview Architectural, innovation drives everything we create — and our Vitranar® flexible resin coating system is proof.

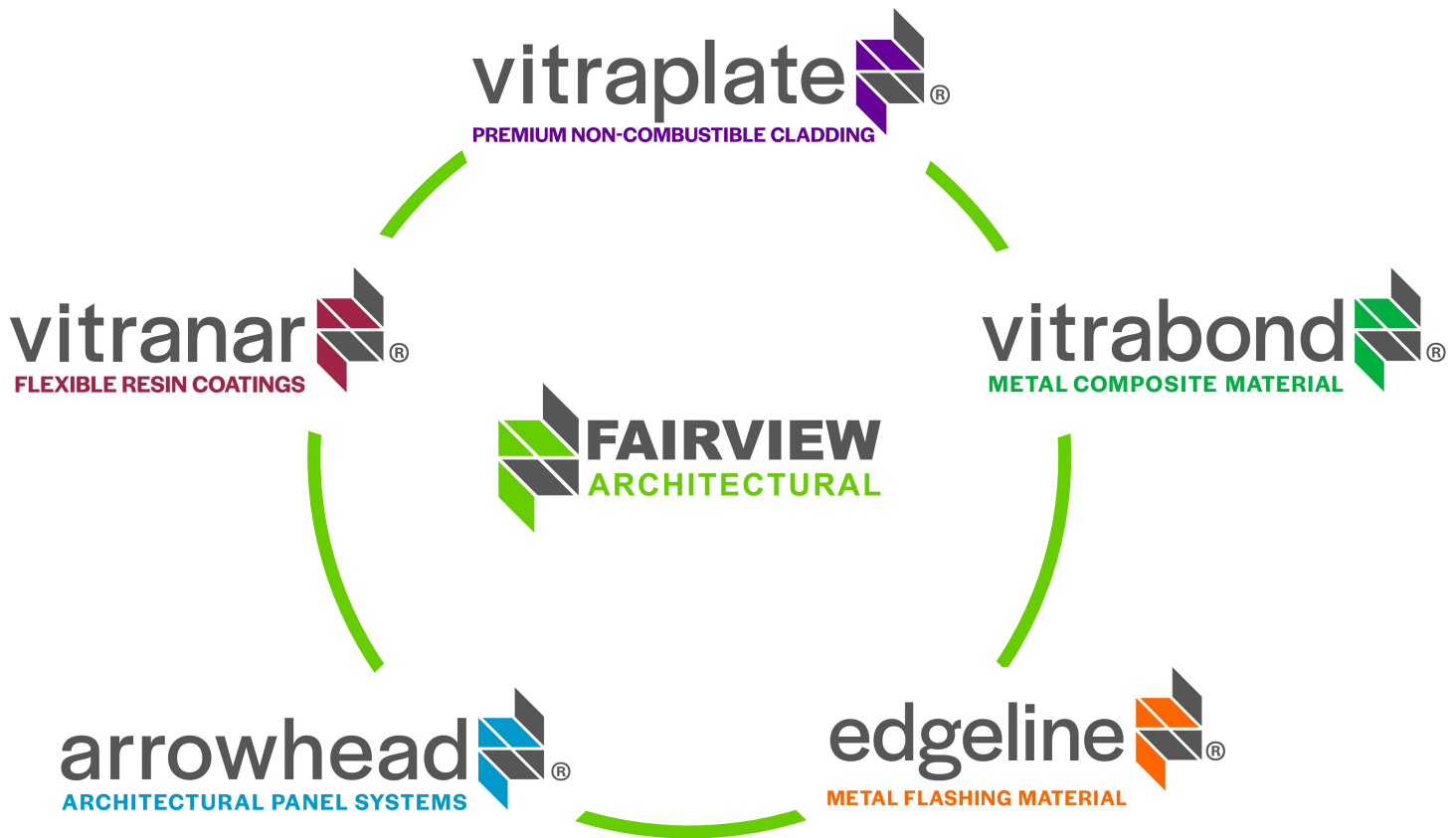
Used across our Vitrabond®, Vitraplate®, Edgeline®, and other prefinished aluminum products, Vitranar® delivers unmatched flexibility, enabling post-fabrication forming of panels up to 3 mm (1/8") thick without cracking or crazing.

Coil-coated for superior consistency and durability, it meets AAMA 2605 and carries warranties of up to 40 years, giving architects and fabricators the freedom to design and build without compromise.

✓ **COIL-COATED**

✓ **FLEXIBLE RESIN**

✓ **AAMA 2605**



WHAT IS COIL-COATING?

Coil-coating is a continuous, factory-controlled process that applies paint on metal coil. It provides unlimited color options, superior adhesion, and high finish durability. Due to its continuous process, coil-coated metal has greater consistency than spray painting.

WHY DO FLEXIBLE RESINS MATTER?

Vitranar® flexible resin coatings allow post-fabrication forming of prefinished aluminum on 4mm ACM material and solid aluminum up to 3 mm (1/8") without cracking or crazing. It removes design limits while preserving AAMA 2605 durability and warranties.

WARRANTIES

Fairview coatings are backed by some of the strongest warranties in the industry — up to 30 years for Vitrabond® and up to 40 years for our solid aluminum products (Vitraplate®, Edgeline®, other thicknesses of solid aluminum). Each finish is tested to meet AAMA 2605 standards, ensuring lasting color, gloss, and performance on every project.

Solid Finishes

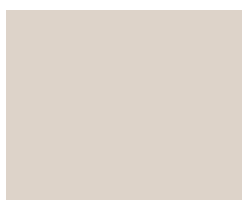
⚠ Sample of these finishes are made to order



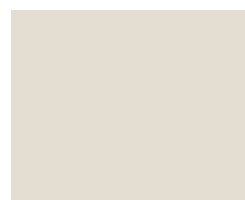
QUAKER BRONZE
FV1385



BROWN COAL
FV9108



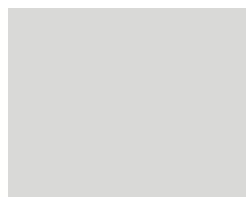
WARM WHITE
FV1035



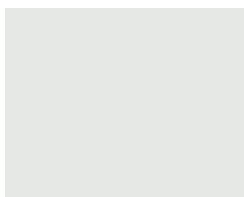
OFF WHITE
FV9702



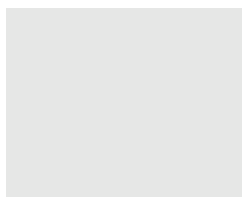
BEIGE
FV1310



PURE WHITE
FV1012



PEARL WHITE GLOSS
FV1025



AIRPORT WHITE SATIN
FV1005



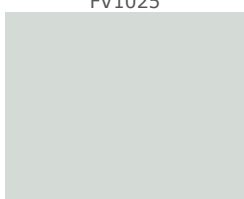
RAILWAY OFF WHITE
FV1090



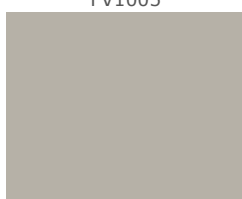
IVORY
FV1093



ASCOT WHITE
FV9210



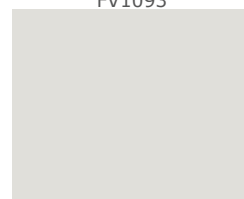
ARCTIC WHITE
FV1400



CASTLE GRAY
FV9202



DOVE GRAY
FV1721



BONE WHITE
FV9902



LAKE FROME
FV9504



FASHION GRAY
FV1729



DARK GRAY
FV1770



ANTHRAZIT GRAY
FV1255



BLACK
FV9130



ENIGMA BLACK
FV9145



UMBRA GRAY
FV1791



THRILLER GRAY
FV1266



GREYSTANES
FV9304



BOAT HARBOR
FV9207



BELLEREVE BAY
FV9107



ULTRAMARINE BLUE
FV1460



DEEP OCEAN
FV1467



BAKOS BLUE
FV1490



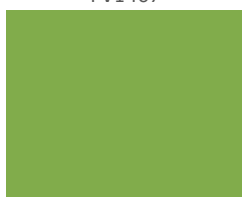
STRONG SAGE
FV1585



VINTAGE GREEN
FV1530



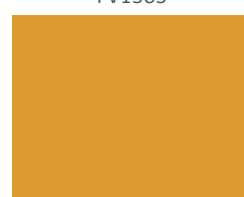
FAIRVIEW GREEN
FV9212



PURE APPLE
FV1550



LEMON YELLOW
FV1120



BRIMSTONE
FV9011

Colors may vary slightly between screens, print, and physical samples. Request physical samples for accurate color representation.

⚠ Sample of these finishes are made to order



LIGHT PINK
FV1634



CORAL
FV1633



PATRIOT RED
FV1669



CAPSICUM RED
FV1690



RUBIS RED
FV1685



BRIGHT ORANGE
FV1190



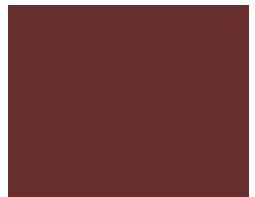
TOFFEE
VBC6548-01



PACKARD SPICE
VBC6548-06



GRAPHITE RED
FV9477



WINE RED
FV1692

Colors may vary slightly between screens, print, and physical samples. Request physical samples for accurate color representation.



Apple Campus 3 - Central & Wolfe, Sunnyvale, CA

Vitrabond FR

2 Custom Finishes

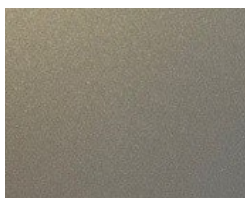
Photography by Tim Griffith - Tim Griffith Photography

Mica and Metallic Finishes

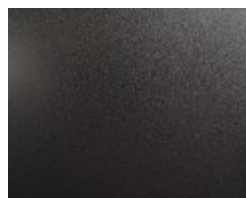
⚠ Sample of these finishes are made to order



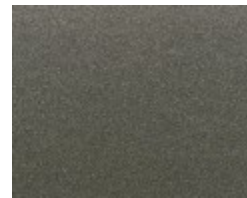
BRIGHT SILVER METALLIC
FV9801



ANODIC CLEAR MICA
FV5282



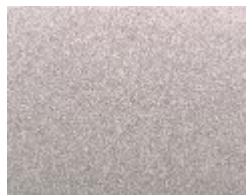
ANODIC SATIN BLACK
FV5292



DARK GREY METALLIC
FV9137



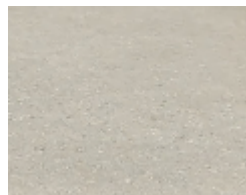
SMOKE SILVER METALLIC
FV9134



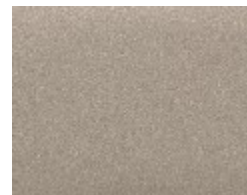
SILVER METALLIC
FV9601



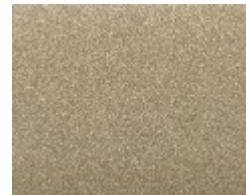
HAZELNUT METALLIC
FV9314



SNOW CLOUD METALLIC
FV4020



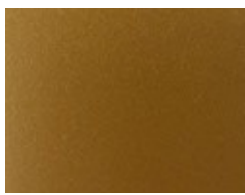
CHAMPAGNE METALLIC
FV9205



BRONZE METALLIC
FV9308



GOLD METALLIC
FV4150



AGED GOLD
FV9409



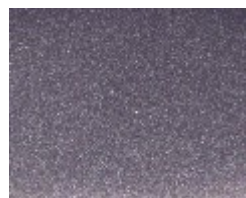
COPPER METALLIC
FV9809



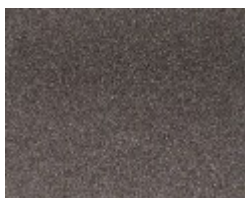
ALMANDINE GARNET
VBC11701-14



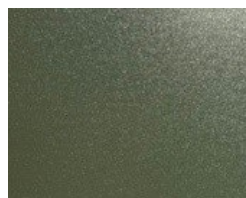
ROYAL BLUE METALLIC
FV4475



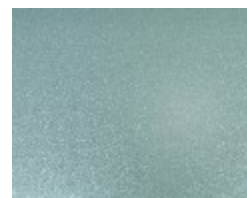
AMETHYST METALLIC
FV4460



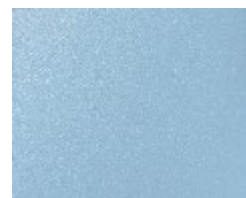
PEWTER METALLIC
FV4265



GREEN METALLIC
FV4540



JADE GREEN METALLIC
FV9031



LIGHT BLUE METALLIC
FV4435

Colors may vary slightly between screens, print, and physical samples. Request physical samples for accurate color representation.

Request Samples



Request Color Match



Finish Capability Chart

Finish Type	Vitrabond® FR core ACM	Vitraplate® 3mm(1/8") plate	Vitrana® Prefinished aluminum	Edgeline® flashing
Solid/Mica/Metallic	✓	✓	✓	✓
Chromatic	✓	✓	✓	✓
Pattern (faux wood, metal, stone, etc)	✓	✓	✓	✓
Natural Metal (zinc, copper, steel, etc.)	✓	—	—	✓
Anodized	✓	✓	✓	✓
Custom Colors	✓	✓	✓	✓

All finishes in this color inspiration guide are standard colors on Vitrabond®. Solid aluminum products, such as Vitraplate® and Vitrana®, can be coil-coated in all finishes, besides natural metals, in this color inspiration guide. For any color, inventory, or sample related questions, please reach out to helpdesk@fairview-na.com.

⚠ Sample of these finishes are made to order

Natural Metals & Anodized

Zinc Composite | Stainless Steel Composite | Copper Composite | Anodized

Natural Metals not available on all Fairview products. Inquire for more details.



SLATE ZINC
FV5210



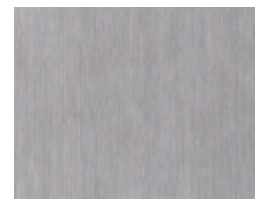
BLUE GREY ZINC
FV5740



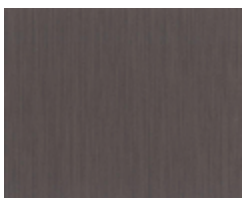
**STAINLESS STEEL
OPAQUE | FV5755**



**STAINLESS STEEL
MIRROR | FV5800**



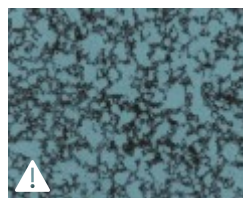
**STAINLESS STEEL
HAIRLINE | FV5850**



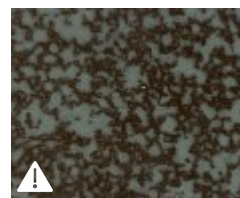
GRAPHITE ZINC
FV5225



CHARCOAL ZINC
FV5290



**PROGRESSIVE BLUE
COPPER PATINA FV5565**



**PROGRESSIVE GREEN
COPPER PATINA FV5560**



CLEAR ANODIZED
FV5860



BLUE ZINC
FV5460



RED ZINC
FV5674



**SOLID BLUE COPPER
PATINA | FV5445**



**SOLID GREEN COPPER
PATINA | FV5550**



**ANODIZED BRILLIANT
MIRROR | FV5801**

Colors may vary slightly between screens, print, and physical samples. Request physical samples for accurate color representation.
Rev. 10/9/2025

Patterned Finishes

⚠ Sample of these finishes are made to order



BAMBOO WHITE
FV5015



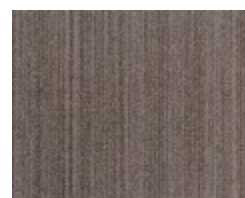
BAMBOO SILVER
FV5730



BAMBOO CHAMPAGNE
FV5753



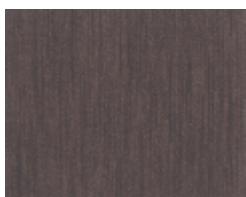
BAMBOO ZINC
FV5268



BAMBOO BRONZE
FV5150



FAUX ZINC LIGHT
FV5790



FAUX ZINC DARK
FV5220



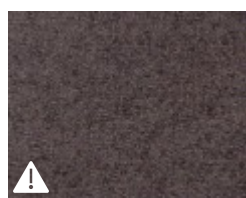
FAUX ZINC CHARCOAL
FV5260



FAUX ZINC BLUE
VBC12480-09



FAUX ZINC GREEN
VBC12480-08



RHINO SLATE
FV0728



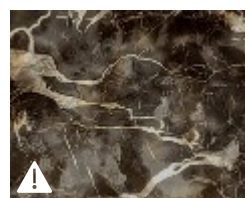
RHINO NICKEL
FV0735



CARRARA MARBLE
VBC13363-01



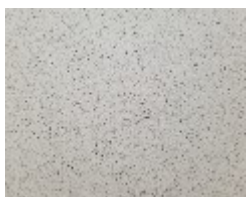
PORTORO MARBLE
VBC13363-02



NERO PORTORO MARBLE
VBC13520-01



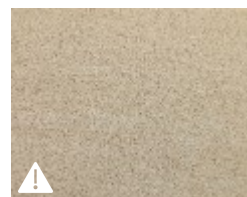
**PROGRESSIVE GREEN
PATINA** VBC12484-01



IVORY CONCRETE
VBC8648-03



DUNE
VBC13270-01



TERRACOTTA TILE
VBC11481-01



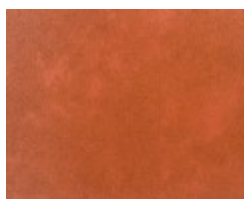
TERRA COTTA
VBC10564-02



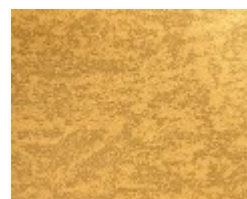
SONORA STEEL
FV5385



AUTUMN RUST
FV5360



MESA RUST
FV5110



EGYPTIAN COPPER
FV5373



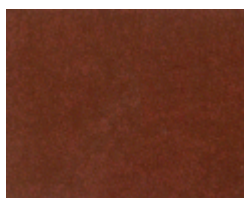
AZTEC RUST
FV5155



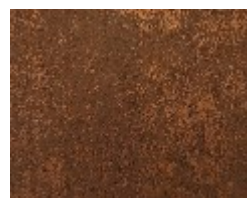
OLD DIRTY BRONZE
VBC11461-03



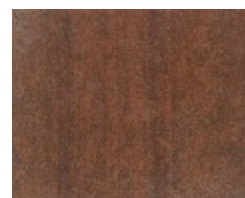
SIERRA RUST
FV5361



DESERT RUST
FV5362



LONGHORN RUST
FV5118



MOJAVE RUST
FV5322



BLACKENED STEEL
FV5295



COSMIC BLACK
FV5270



AZURE PATINA
VBC8829-15



NIMITZ BLUE
FV5484



NEBULA BLUE
VBC8829-14

Colors may vary slightly between screens, print, and physical samples. Request physical samples for accurate color representation.

Patterned Finishes

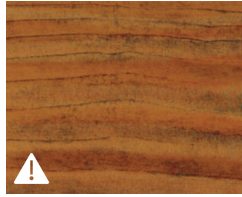
! Sample of these finishes are made to order



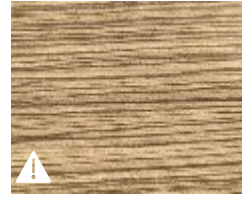
SILVER BEECH
VBC10244-02



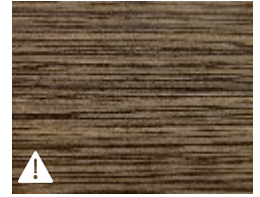
BEACHWOOD
FV8719



ROUGH SAWN OAK
FV8340



ZEBRAWOOD LIGHT
VBC12480-07



ZEBRAWOOD
FV8390



LIGHT MAPLE
VBC8685-01



GUNSTOCK MAPLE
FV8379



MODERN TEAK
FV8332



BLACK WALNUT
FV8349



CONTEMPORARY OAK
FV8724



AUTUMN CHERRY
VBC13274-07



ROYAL TIMBER
VBC10244-01



DOUGLAS FIR
VBC6527-01



SILVER MAPLE
FV8123



CALIFORNIA REDWOOD
FV8723



The Watson, Quincy, MA
Vitrabond FR
Sierra Rust FV5361

Photography by Flaunt Photography

Colors may vary slightly between screens, print, and physical samples. Request physical samples for accurate color representation.



Fairview Architectural North America

(860)-242-2711 | helpdesk@fairview-na.com
www.fairview-na.com

75 Peters Rd., Bloomfield, CT 06002

Revision Date: 10/9/2025

Photography by Tim Griffith - Tim Griffith Photography