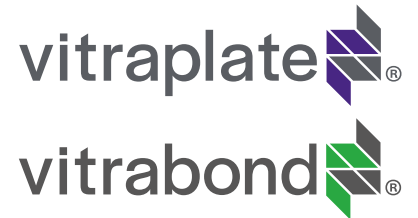


# CASE STUDY



## Northpoint Parcel U

<b>LOCATION:</b>	<b>KENDALL SQUARE, CAMBRIDGE, MA</b>
<b>SQ FT:</b>	<b>60,000</b>
<b>ARCHITECT:</b>	<b>ENNEAD</b>
<b>GENERAL CONTRACTOR:</b>	<b>JOHN MORIARTY &amp; ASSOCIATES</b>
<b>PRODUCT:</b>	<b>VITRAPLATE® VITRABOND®</b>

Nestled in the heart of Kendall Square in Cambridge, MA, this impressive 12-story lab and office building stands as a beacon of sustainable design with its LEED Platinum certification.

The exterior is creatively divided into multiple terraces, which break up the building's height and enhance the visual appeal. The façade features a blend of finishes, including one standard Vitrabond® finish, and one custom Vitraplate® finish.

### FINISHES



Anodic  
Satin Black



Deep  
Space



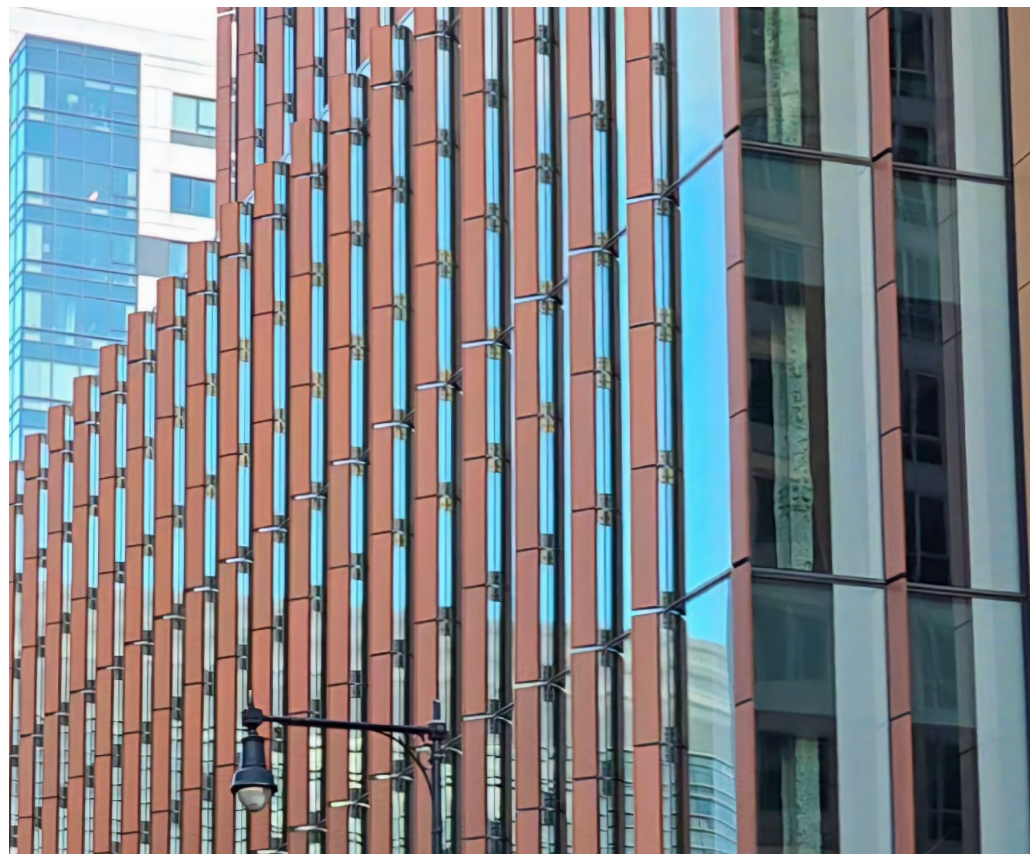


**vitraplate**®  
PREMIUM NON-COMBUSTIBLE CLADDING

**vitrabond**®  
METAL COMPOSITE MATERIAL

Fairview products are prominently featured on the canopies, shadow boxes, and exterior metal wall panels. These elements enhance the building's modern and dynamic appearance.

The façade features a blend of finishes, including one standard Vitrabond® finish, and one custom Vitraplate® finish.



Photography © Fairview Architectural

Contact us:

860-242-2711    [helpdesk@fairview-na.com](mailto:helpdesk@fairview-na.com)  
75 Peters Road, Bloomfield, CT 06002, USA

